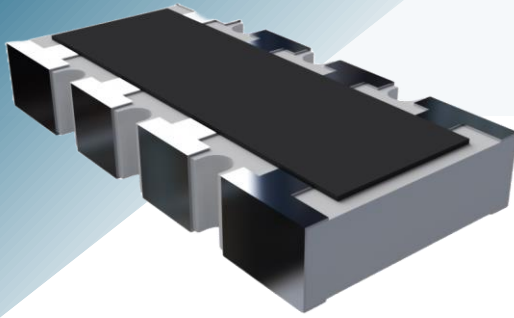


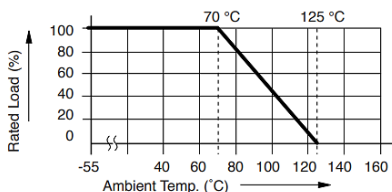
# HRRACX Hi-Reliability Chip Resistor Arrays



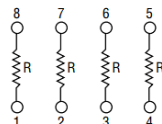
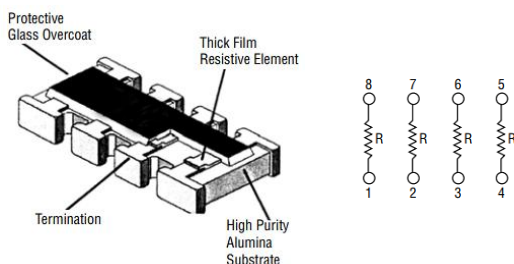
## Electrical Characteristics

Part Number	HRRACX1206-XXXJ1XX
Number of Resistors/Elements	4
Power Rating @ 70 °C per Resistor	63 mW
Resistance Tolerance	1%, 5%
Resistor Range and & TCR Plus zero-ohm jumper	5%, 10 Ω ~ 1 MΩ, 200 ppm/°C 5%, 3 ~ 9, 1 Ω, 400 ppm/°C
Maximum Overload Voltage	100 V
Maximum Working Voltage	50 V
Operating Temperature Range	-55 °C to +125 °C
Rating Temperature	+70 °C
Zero Ohm Jumper Current Rating / Max. Resistance (per resistor/element)	1 A / 2.5 A / 50 mΩ max.

## Derating Curve



## Construction & Isolated Circuit



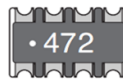
## FEATURES

- Convex termination style
- Four isolated resistors
- 3 Ω to 1 MΩ and zero jumper
- Resistance tolerance: 1% and 5%
- Available with Sn, Sn/Pb, Au terminations
- MIL-PRF-55342 and Space Level screening available

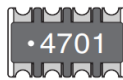
## APPLICATIONS

- Aerospace
- Avionics
- Military
- Medical

## Typical Part Marking



±5% (E24)  
Three digits; first two digits are significant; third digit is number of zeros to follow.  
EX: 472 = 4700 Ω = 4.7 KΩ



±1% (E96)  
Four digits; first three digits are significant; fourth digit is number of zeros to follow.  
EX: 4701 = 4700 Ω = 4.7 KΩ

## Standard Screening Options

- Option 1: 100% visual inspection per MIL-PRF-55342, AS9102 FAIR, MIL-STD-1580 DPA.
- Option 2: 100% Group A and B Screening per MIL-PRF-55342, AS9102 FAIR, MIL-STD-1580 DPA (see AEM detail specification for more details).
- Option 3: 100% Group A, B, and C Screening per MIL-PRF-55342, AS9102 FAIR, MIL-STD-1580 DPA (see AEM detail specification for more details).
- Option 4: 100% Group A, B, and Qualification Screening per MIL-PRF-55342, AS9102 FAIR, MIL-STD-1580 DPA (see AEM detail specification for more details).
- Option 5: Customer Source Control Drawing (SCD) defined screening. AEM will customize screening based on customer requirements.

## Ordering Information

HRRACX 1206 - 103 J 1 PB

HRRACX - High Reliability Chip Array  
Convex Terminations

1206 - EIA Package Size

103 - Resistance Code

For 1% Tolerance: First three digits are significant; fourth digit represents number of zeros to follow (example: 8252 = 82.5 KΩ). "R" represents decimal point (example: 24R3 = 24.3 Ω)

For 5% Tolerance: First two digits are significant; third digit represents number of zeros to follow (example: 474 = 470 KΩ) - "R" represents decimal point (example: 4R7 = 4.7 Ω)  
000 - Zero Ohm Jumper

J - Resistance Tolerance (F = 1%, J = 5%)

Screening Options - 1, 2, 3, 4, 5 (see screening options above)

Termination Code - PB - Sn/Pb plated; SN - Sn plated; AU - Au plated

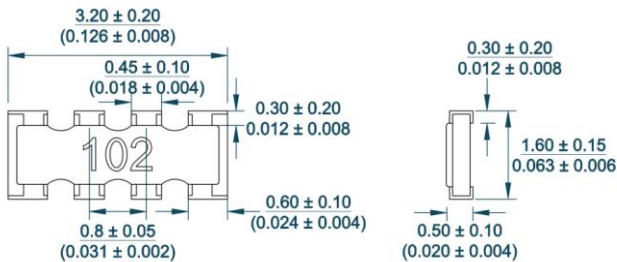
# AEM, INC.'s HRRACX Hi-Reliability Chip Resistor Arrays

## Electrical Characteristics

AEM PN	Package Size	Resistance Code	Resistance Value (Ohms)	Resistance Tolerance	Screening Options	Termination Code
HRRACX1206-000J	1206	000	0 (zero ohm jumper)	5%	X	XX
HRRACX1206-1000F	1206	1000	100	1%	X	XX
HRRACX1206-1001F	1206	1001	1K	1%	X	XX
HRRACX1206-1002F	1206	1002	10K	1%	X	XX
HRRACX1206-1003F	1206	1003	100K	1%	X	XX
HRRACX1206-100J	1206	100	10	5%	X	XX
HRRACX1206-101J	1206	101	100	5%	X	XX
HRRACX1206-102J	1206	102	1K	5%	X	XX
HRRACX1206-103J	1206	103	10K	5%	X	XX
HRRACX1206-104J	1206	104	100K	5%	X	XX
HRRACX1206-10R0F	1206	10R0	10	1%	X	XX
HRRACX1206-122J	1206	122	1.2K	5%	X	XX
HRRACX1206-151J	1206	151	150	5%	X	XX
HRRACX1206-152J	1206	152	1.5K	5%	X	XX
HRRACX1206-153J	1206	153	15K	5%	X	XX
HRRACX1206-182J	1206	182	1.8K	5%	X	XX
HRRACX1206-183J	1206	183	18K	5%	X	XX
HRRACX1206-2002F	1206	2002	20K	1%	X	XX
HRRACX1206-204J	1206	204	200K	5%	X	XX
HRRACX1206-2201F	1206	2201	2.2K	1%	X	XX
HRRACX1206-2202F	1206	2202	22K	1%	X	XX
HRRACX1206-220J	1206	220	22	5%	X	XX
HRRACX1206-2210F	1206	2210	221	1%	X	XX
HRRACX1206-2212F	1206	2212	22.1K	1%	X	XX
HRRACX1206-221J	1206	221	220	5%	X	XX
HRRACX1206-222J	1206	222	2.2K	5%	X	XX
HRRACX1206-223J	1206	223	22K	5%	X	XX
HRRACX1206-22R0F	1206	22R0	22	1%	X	XX
HRRACX1206-22R1F	1206	22R1	22.1	1%	X	XX
HRRACX1206-240J	1206	240	24	5%	X	XX
HRRACX1206-272J	1206	272	2.7K	5%	X	XX
HRRACX1206-273J	1206	273	27K	5%	X	XX

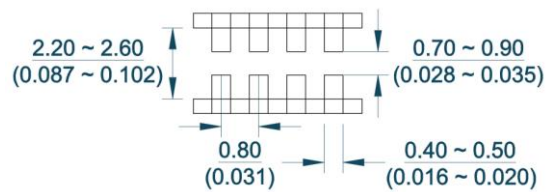
\* A list of all additional part numbers are provided upon inquiry.

## Product Dimensions



mm  
(inches)

## Recommended Pad Layout



mm  
(inches)

